

Drawbar eye: $\varnothing 76$, axially fixed, acc. to VG 74059 or class L acc. to ECE 55-01 or equal

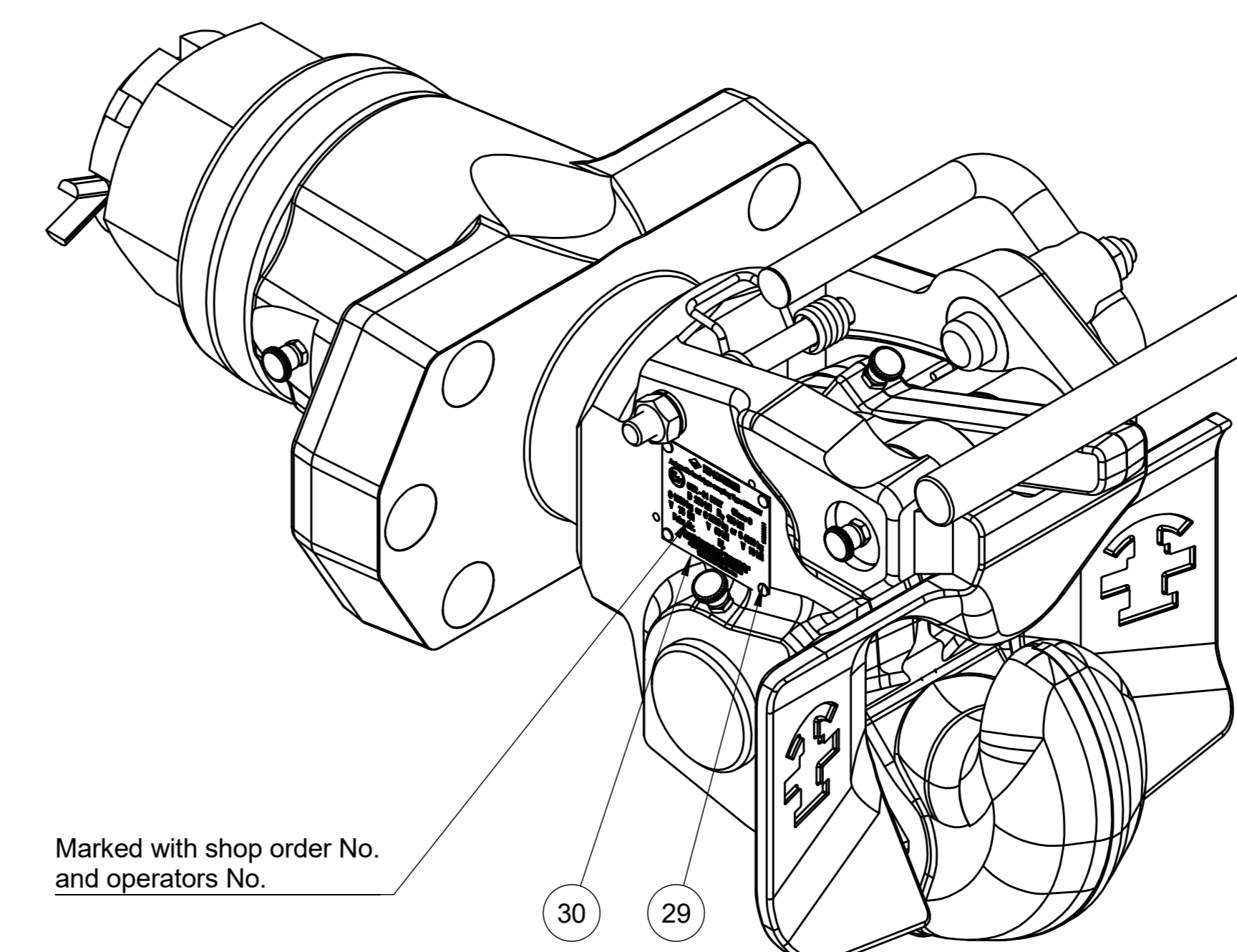
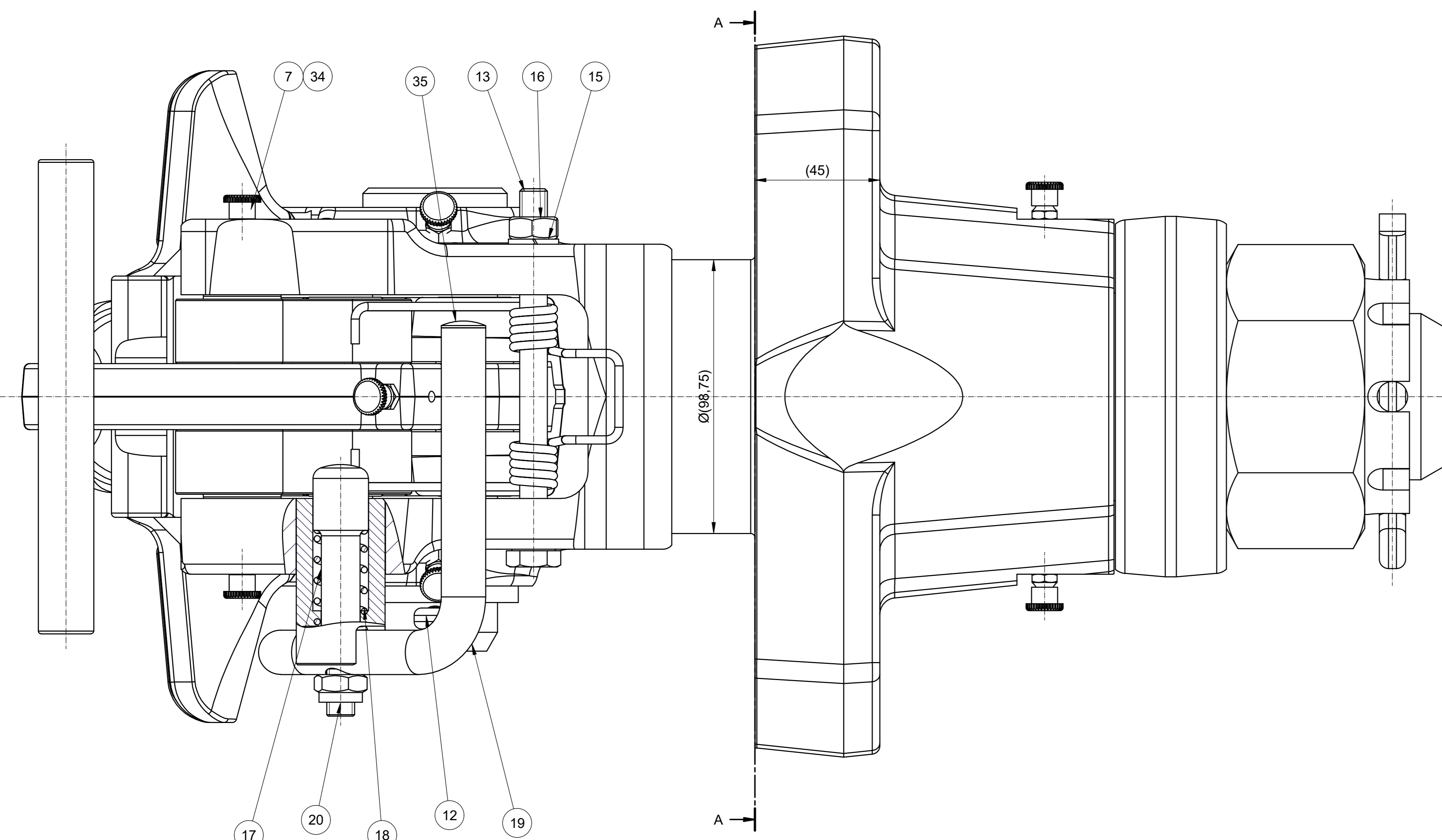
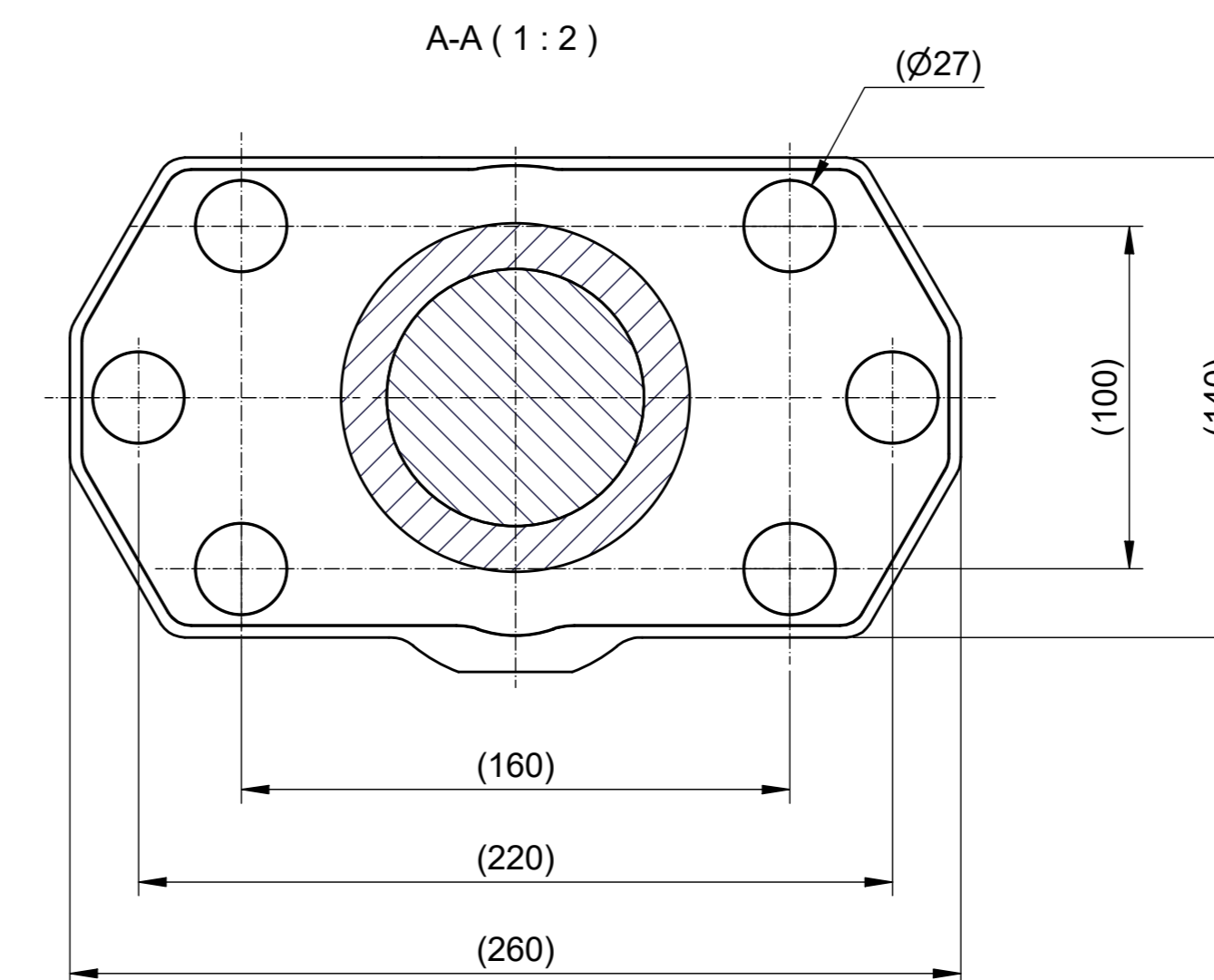
Articulation of drawbar eye:
 horizontally: $\pm 90^\circ$
 vertically: $\pm 45^\circ$
 axially: $\pm 360^\circ$ with a minimum tightening torque of 100 Nm

ECE- Type approval: (E11) 55R - 01 5987

Class acc. to ECE 55-01: S

Adm. D-value: 250 kN
 Adm. D₋ value: 150 kN
 Adm. static vertical load S: 1000 kg or 2000 kg or 4000 kg
 Adm. V-value: 75 kN 63 kN 39 kN

1 Surface treatment acc. to Ringfeder standard RS 8319 (Colour green acc. to RAL 6031)



		2017-05-07 RB 12670 14996720 RB	2011-11-23 RB
		14996720 info	
VBG GROUP RU K5 DV		This drawing is the property of VBG Group AG and is protected in accordance with German law. Changes made by third parties are prohibited. No warranty for VBG AG.	