

Drawbar eye: Ø76, not axially rotatable, according to VG 74059 respectively class L according to ECE-55-01 or identically constructed.

Angular displacement of drawbar eye horizontally: ±90° vertically: ±40° axially: ±360° with a minimum torque of 100Nm

ECE-Type approval: (E11) 55R - 01 6752

Class acc. to ECE 55-01: S

Adm. D-value: 75 kN
Adm. Dc -value: 66 kN
Adm. Static support load: 700 kg or 400 kg or 250 kg
Adm. V-value: 20 kN 23 kN 25 kN

1 Surface treatment according to RINGFEDER factory standard RS8319 (Colour green acc to RAL 6031) Greasing and Other special treatments according to factory standard RS10853.

Zugöse: Ø76, axial nicht drehbar, nach VG 74059 bzw. Klasse L nach ECE-55-01 oder baugleich

Winkelausschläge der Zugöse horizontal: ±90° vertikal: ±40° axial: ±360° bei einem Mindestdrehmoment von 100Nm

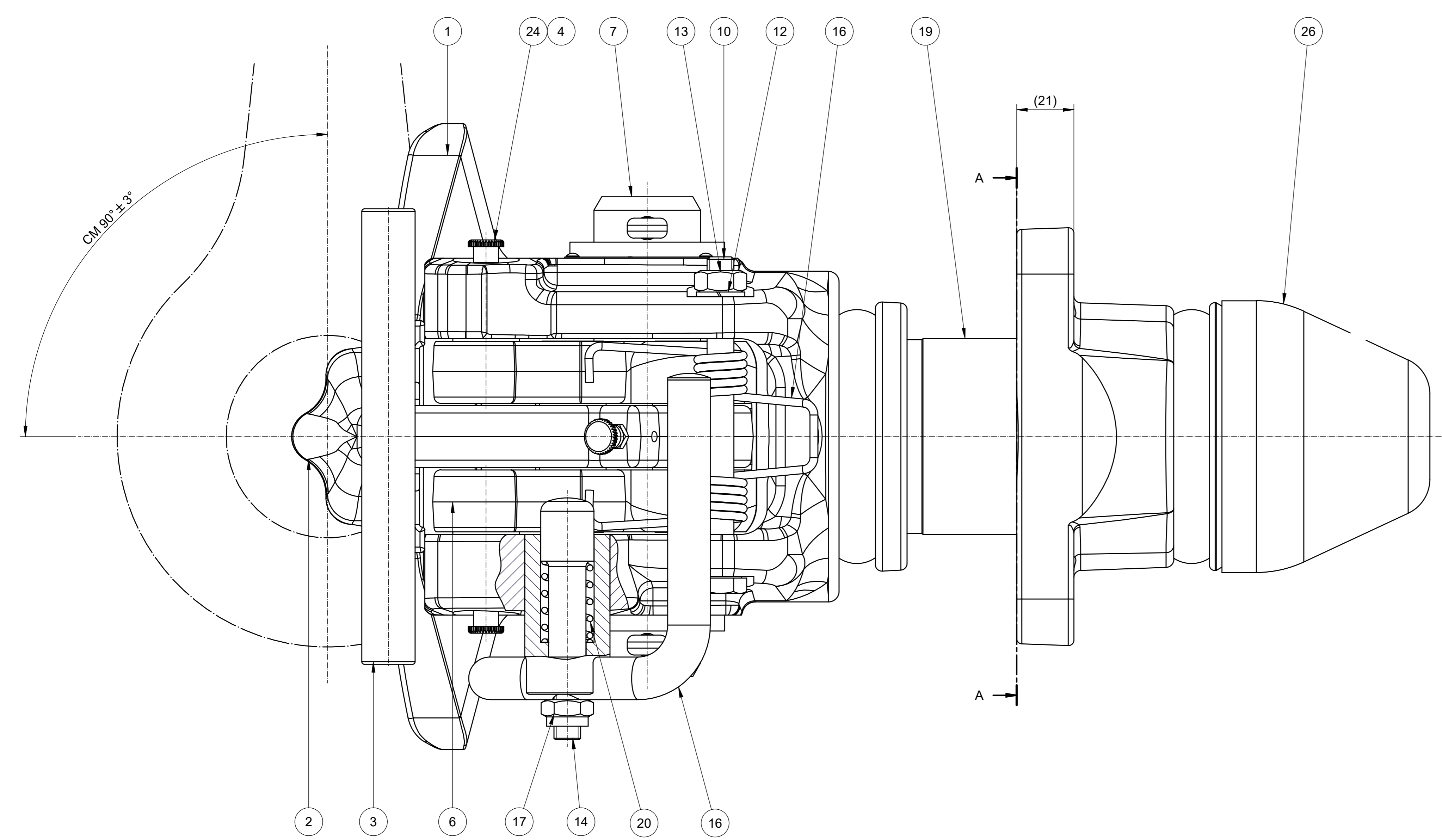
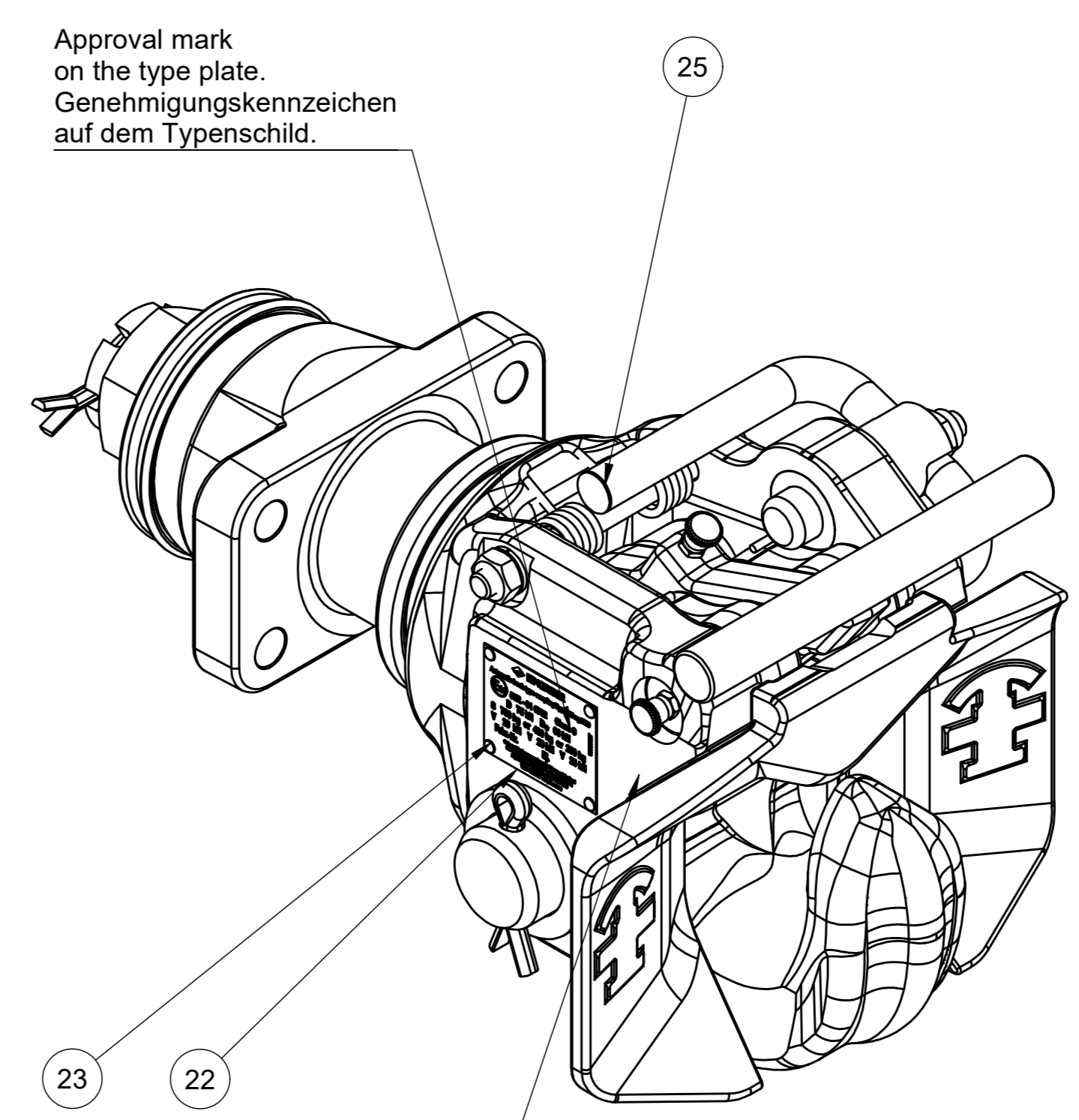
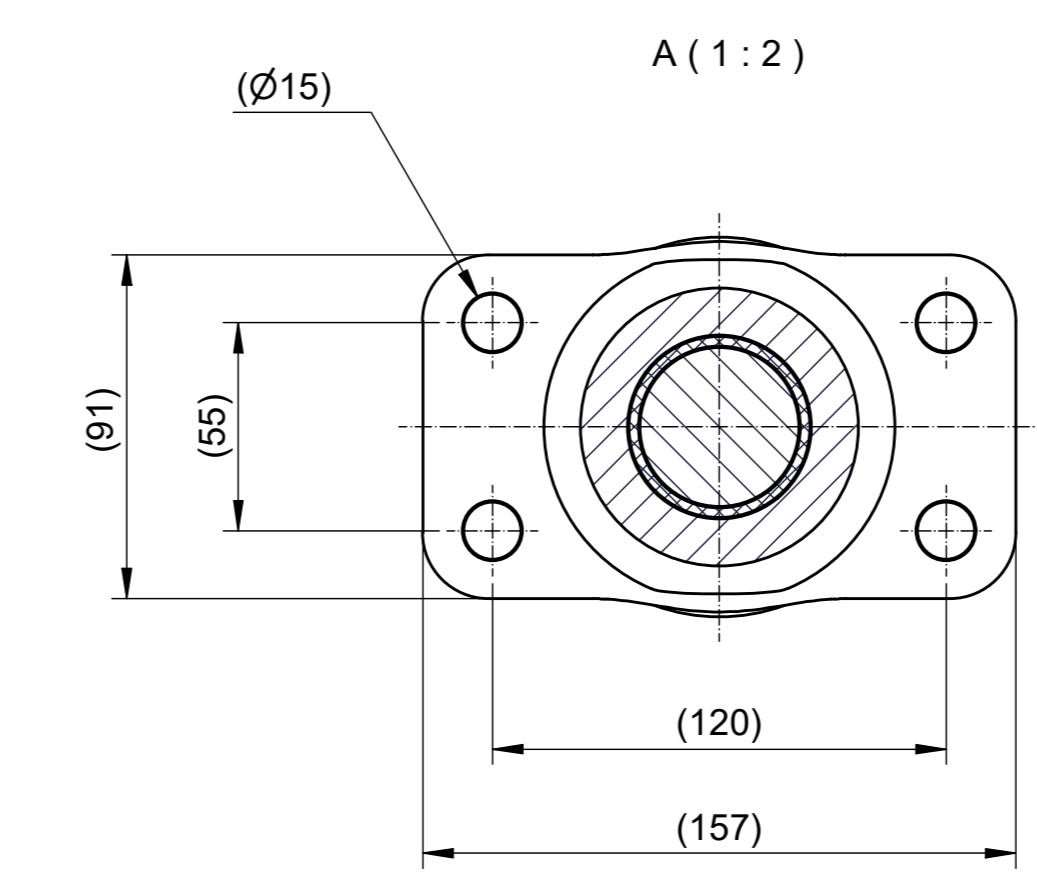
Zul. D-Wert: 75 kN
Zul. Dc -Wert: 66 kN
Zul. stat. Stützlast: 700 kg oder 400 kg oder 250 kg
Zul. V-Wert: 20 kN 23 kN 23 kN

ECE-Typgenehmigung: (E11) 55R - 01 6752

Klasse gemäss to ECE 55-01: S

1 Oberflächenbehandlung gem. RINGFEDER-Werksnorm RS8319 (Farbe grün nach RAL 6031) Schmiering und andere Behandlungen gemäß RINGFEDER-Werksnorm RS10853.

CM= Critical Measure, documentation required.
Documented functional test required.



CM Marked with shop order No. and operators No.

		15.11.2023 MKL 14996341 A0 1:1 14996341 Info	22.02.2012 RB
		Automatic hook coupling type	RUwg k2d